

## Gα<sub>i</sub>-GTP

**Catalog Number:** 26901

**Gene Symbol:** Gnai

**Description:** Anti-Gα<sub>i</sub>-GTP Mouse Monoclonal Antibody

**Background:** Heterotrimeric G proteins are critical cellular signal transducers. Gα<sub>i</sub> represents one sub-family of G proteins that could mediate the inhibition of adenylyl cyclases. Other biochemical and physiological functions of Gα<sub>i</sub> proteins are being explored.

**Immunogen:** Recombinant full-length protein of active Gα<sub>i1</sub>

**Tested Applications:** IP, IHC, IF

**Recommended Dilutions:**

IP: 1 μg for 1~2 mg total cellular proteins

IHC, IF: 1:50-1:250

**Concentration:** 1 mg/ml

**Host:** Mouse

**Clonality:** Monoclonal

**Isotype:** IgG1

**Purity:** Purified from ascites

**Format:** Liquid

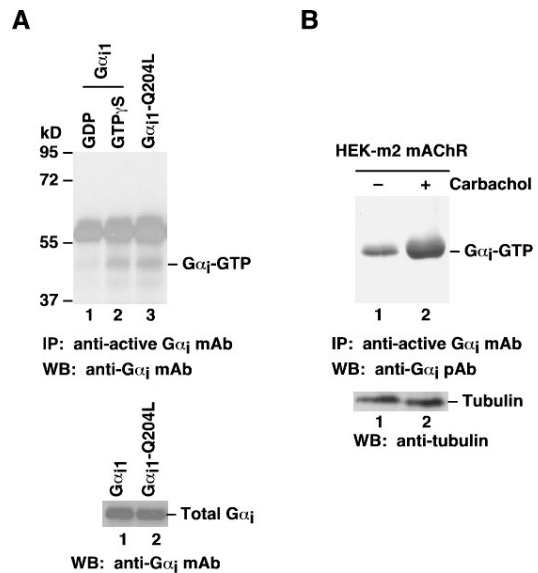
**Preservative:** No

**Constituents:** PBS (without Mg<sup>2+</sup> and Ca<sup>2+</sup>), pH 7.4, 150 mM NaCl and 50% glycerol

**Species Reactivity:** Anti-Gα<sub>i</sub>-GTP monoclonal antibody recognizes only the active Gα<sub>i1</sub>, Gα<sub>i2</sub>, and Gα<sub>i3</sub> of vertebrates

**Storage Conditions:** Store at -20°C. Avoid repeated freezing and thawing

## Immunoprecipitation/Western blot



### Gα<sub>i</sub> Activation Assay.

**A.** CHO cells were transfected with wild type Gα<sub>i1</sub> (lanes 1 and 2) or constitutively active Gα<sub>i1</sub>-Q204L (lane 3). Cell lysates were treated with GDP (lane 1) or GTPγS (lane 2). Lysates were then incubated with anti-Gα<sub>i</sub>-GTP monoclonal antibody (Cat. # 26901) (top panel). The precipitated Gα<sub>i</sub>-GTP was immunoblotted with anti-Gα<sub>i</sub> monoclonal antibody (Cat. # 26003). The bottom panel shows the Western blot with anti-Gα<sub>i</sub> monoclonal antibody (Cat. # 26003) of the cell lysates.

**B.** HEK293 cells stably expressing human m2 mAChR were treated with (lane 2) or without (lane 1) carbachol. Cell lysates were then incubated with anti-Gα<sub>i</sub>-GTP monoclonal antibody (Cat. # 26901) (top panel). The precipitated active Gα<sub>i</sub> was immunoblotted with anti-Gα<sub>i</sub> rabbit polyclonal antibody (Cat. # 21006). The bottom panel shows the Western blot with anti-tubulin of the cell lysate.

FOR RESEARCH USE ONLY. NOT FOR DIAGNOSTIC APPLICATIONS